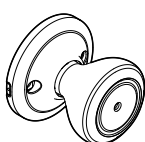


Passage



Privacy



Entry

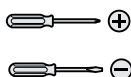


Dummy  
(Non-Rotating)

**\*Tools**



3/32" (2 mm)



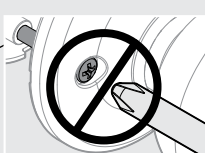
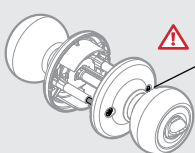
wood block

\*Tools will depend on install type

[Scroll to the bottom \(STEP 6\) if you need help in preparing your door](#)

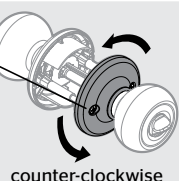
## 1 Disconnect knobs (if pre-assembled)

- A** Do not remove screws!

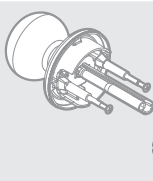


If installing a non-rotating knob, skip to step 4.

- B** Twist the side with the holes.



counter-clockwise

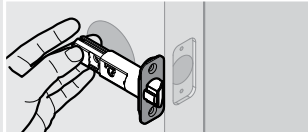


Pull to separate knobs.

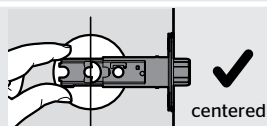
- C** Set knobs aside until step 5.

## 2 Adjust the backset of the latch (if needed)

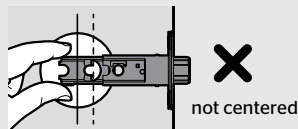
- A** Hold the latch in front of the door hole, with the latch face flush against the door edge.



- B** If the latch holes are centered in the door hole, no adjustment is required. Proceed to step 4.  
If the latch holes are NOT centered, adjust latch. See "Latch Adjustment" (step 3C).



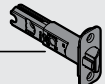
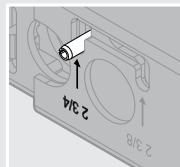
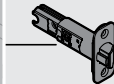
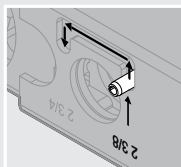
centered



not centered

- C** Latch Adjustment (only if needed)

Move the pin to extend the latch.



## 3 Install latch

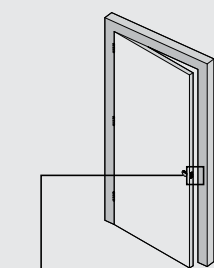


Door edge chiseled

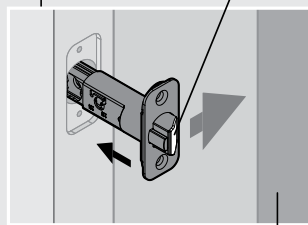
or



Door edge NOT chiseled

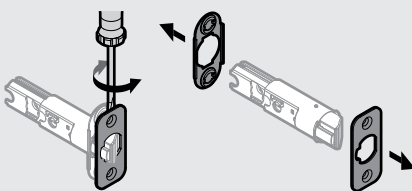


slant of latch bolt faces door frame

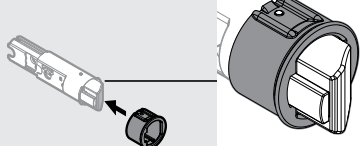


door frame

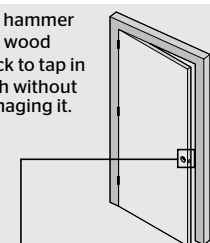
Remove plates



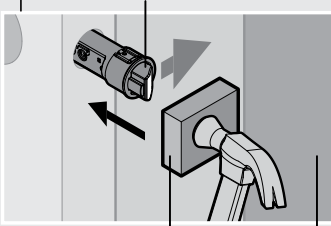
Install drive-in collar



Use hammer and wood block to tap in latch without damaging it.



slant of latch bolt faces door frame



wood block

door frame

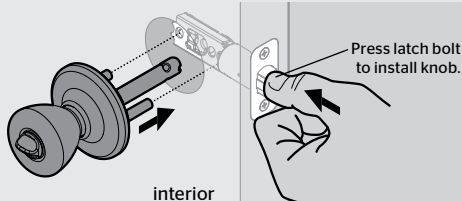
## 4 Install knobs

### Option 1: Install privacy/passage knobs

**A**



**IMPORTANT:** If installing a passage lock on an entry door, make sure the knob with the screw holes is on the interior side of the door.



**B**

Align round edges.

exterior

**C**

Ensure holes are horizontal.

**D**

Tip: Pull knob slightly away from door to see where screws insert.

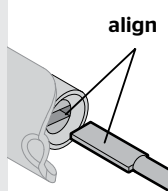
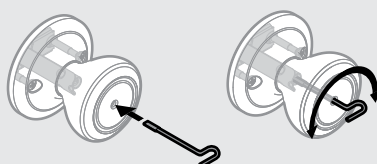
**E**

Push up on knob while tightening screws to keep latch horizontal and centered.



### Privacy locks only

Save the bedroom/bathroom emergency unlock tool for future use.



### Option 2: Install entry knobs

**A**

Press latch bolt to install exterior knob.

exterior

OK if flipped

**B**

Align round edges.

interior

**C**

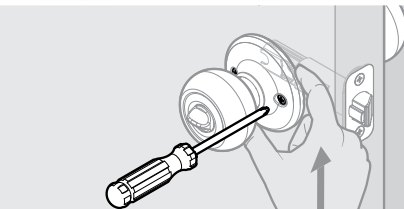
To catch screws:

1. Twist counter-clockwise

2. Push while twisting

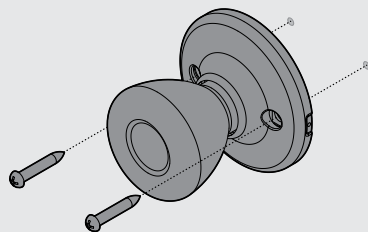
3. Twist clockwise

**D**



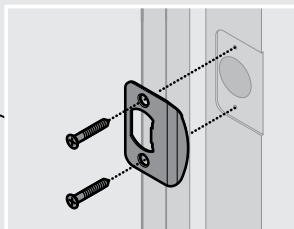
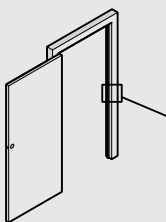
### Option 3: Install dummy (non-rotating) knobs

**A**



## 5 Install strike to door frame

**A**

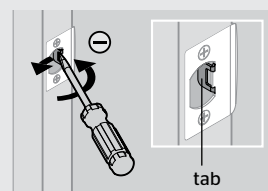
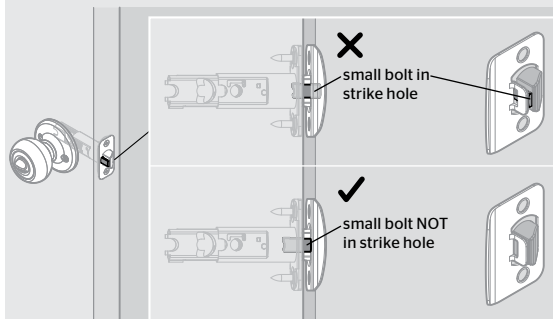


**B**

Close door, test latch operation and make adjustments as needed:

If small bolt of latch enters strike hole, reposition strike.

If latch is loose in the strike, adjust the strike tab so it grips the latch bolt better when the door is closed.



## 6 Preparing Your Door

For consumers requiring the door prep template, please visit: [images.kwikset.com/is/content/BDHHL/drilling-instructions\\_knob](https://images.kwikset.com/is/content/BDHHL/drilling-instructions_knob)

2-3/8" (60 mm)  
or  
2-3/4" (70 mm)

2-1/8"  
54 mm

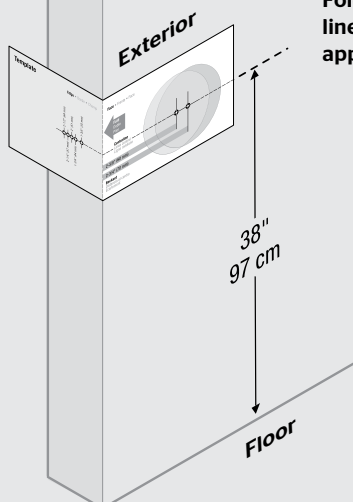
1-3/8"-2-1/4"\*  
35 mm-57 mm\*

1"  
25 mm

\*Call Kwikset to order a service kit for 2-1/4" (57 mm) thick doors.

### Use template to mark holes on door

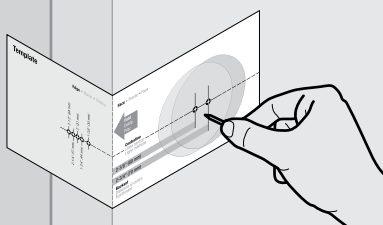
A



Select the template that allows you to place the template on the EXTERIOR side of door. Fold template along fold line and place fold line along the edge of door. Place centerline approximately 38" (97 cm) from the floor.

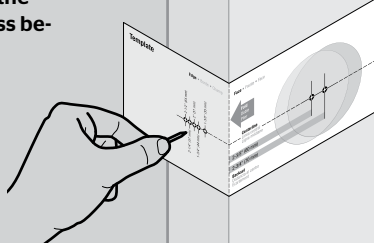
B

Mark hole on the face of the door. Select desired backset before marking hole. If there is another hole in the door, or if you are drilling double doors, make sure to keep the backset consistent.



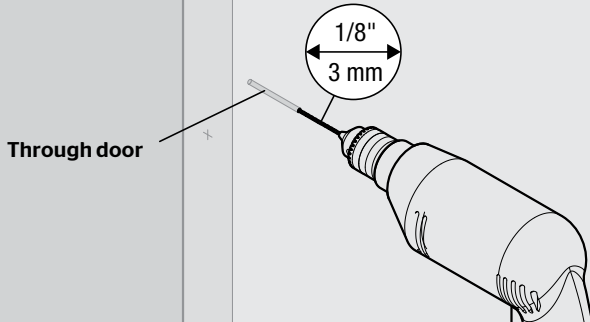
C

Mark hole on the edge of the door. Select door thickness before marking hole.

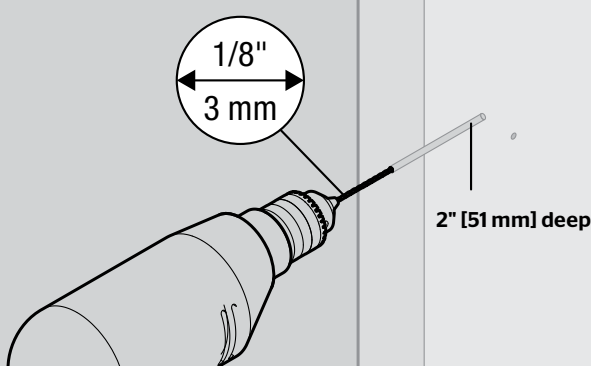


### Drill holes in door

A

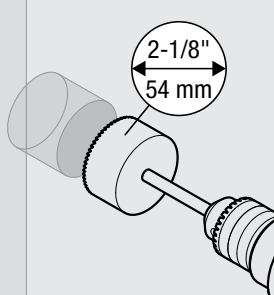


B

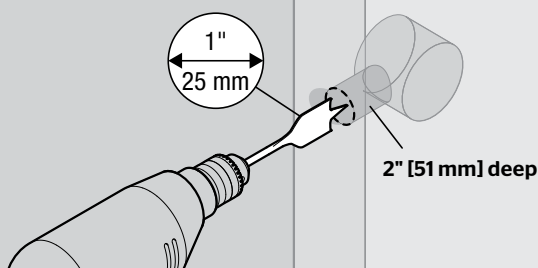


C

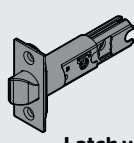
Drill from one side until the point of drill just breaks through, then complete hole from the other side to prevent splintering.



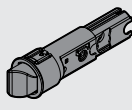
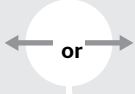
D



## Determine which latch will be installed and prepare door edge



Latch with rectangular faceplate

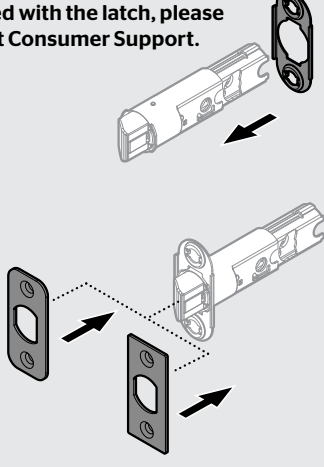


Latch with drive-in collar

**A**

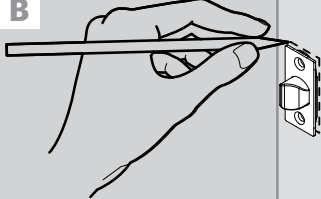
If latch is not pre-assembled with desired faceplate, assemble it as shown.

If desired faceplate is not supplied with the latch, please contact Consumer Support.



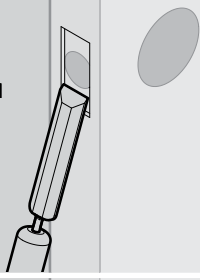
Proceed to Step 2.

**B**



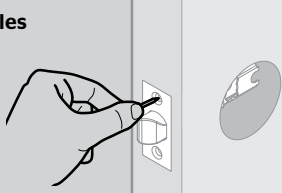
**C**

Chisel



**D**

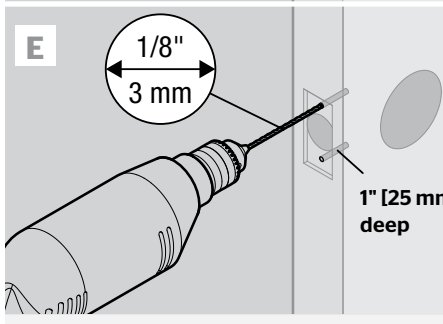
Mark holes



**E**

1/8"  
3 mm

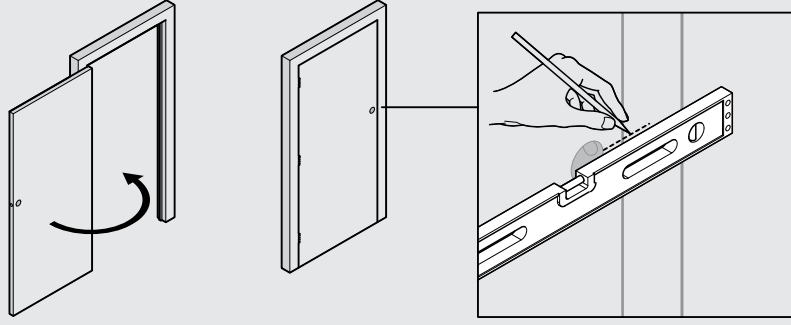
1" [25 mm]  
deep



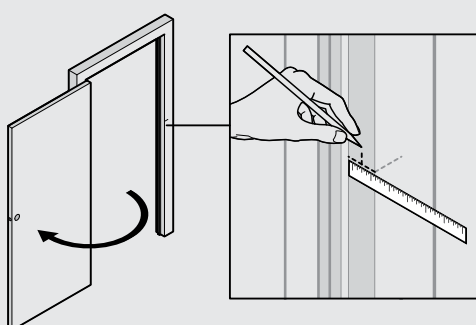
## Prepare door frame for strike

**A**

Locate center of strike hole:



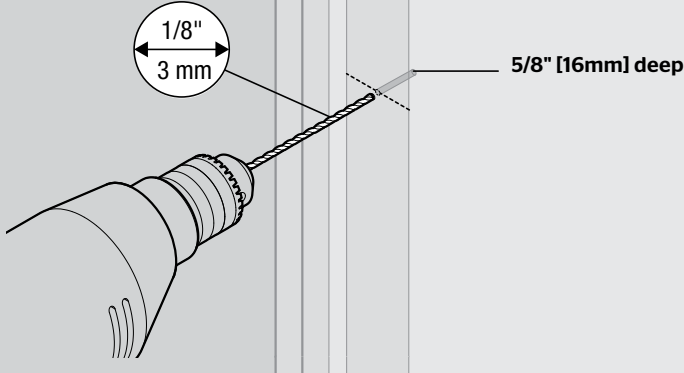
Measure back from door stop, 1/2 thickness of door.



**B**

1/8"  
3 mm

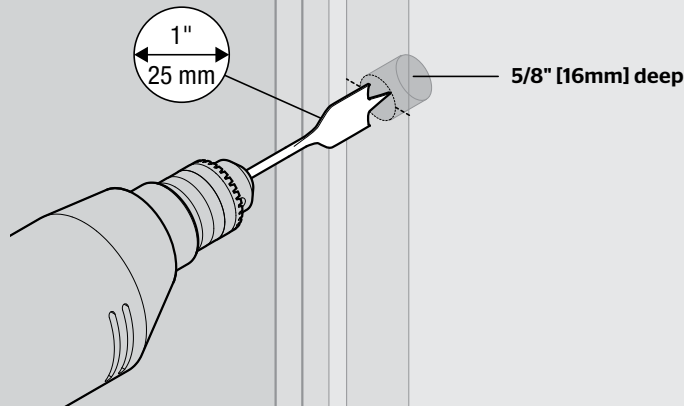
5/8" [16mm] deep



**C**

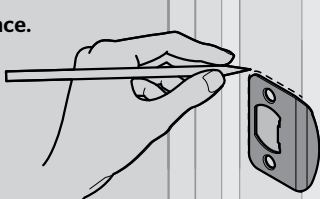
1"  
25 mm

5/8" [16mm] deep



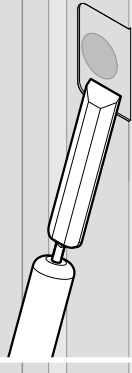
**D**

Keep level and trace.



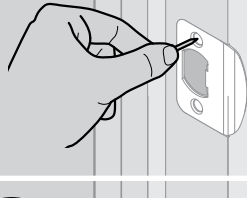
**E**

Chisel



**F**

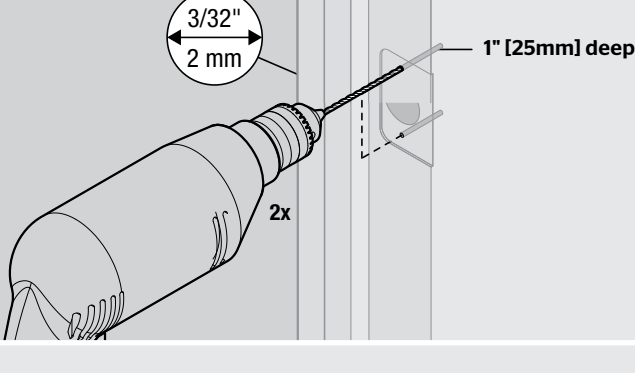
Mark holes (2x)



**G**

3/32"  
2 mm

1" [25mm] deep



Register your product at [www.kwikset.com/productregistration](http://www.kwikset.com/productregistration)  
Rate your product at [www.kwikset.com/reviews](http://www.kwikset.com/reviews)

**WARNING:** This Manufacturer advises that no lock can provide complete security by itself. This lock may be defeated by forcible or technical means, or evaded by entry elsewhere on the property. No lock can substitute for caution, awareness of your environment, and common sense. Builder's hardware is available in multiple performance grades to suit the application. In order to enhance security and reduce risk, you should consult a qualified locksmith or other security professional.